



THIRD SPACE
LEARNING

Ready-to-go Lesson Slides

Year 2

Time

Lesson 1

Sum1

At Third Space Learning we provide personalised online lessons from specialist maths tutors to support the target groups in your school.

These ready-to-go slides are designed to work alongside our interventions to supplement quality first teaching and raise attainment in maths for all pupils.

To find out more about how you could use our 1-to-1 interventions year-round to boost maths progress in your school then get in touch:

020 3771 0095

hello@thirdspacelearning.com

Boosting maths progress through 1-to-1 conversations...



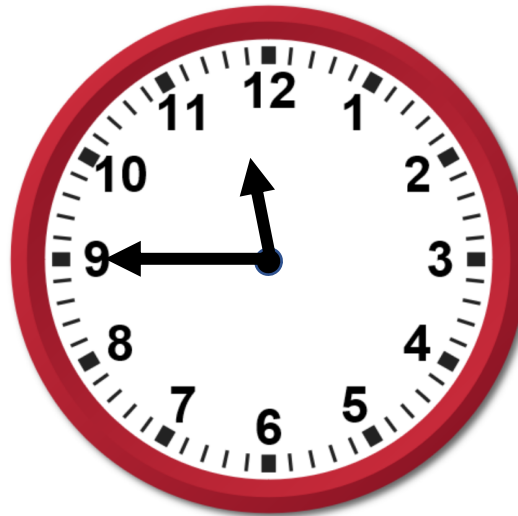
To tell the time to the hour and the half hour

- ☐ I can read clock faces to tell the time to the hour and half past the hour
- ☐ I can explain why the time is '___ o'clock' or 'half past ___'
- ☐ (I can create times using clocks with moveable hands)

Starter: The children in Ava's class are telling the time.
Do you agree with Ava? Can you explain your thinking?



I think that the
time is very
nearly 9 o'clock.



To tell the time to the hour and the half hour

- ☐ I can read clock faces to tell the time to the hour and half past the hour
- ☐ I can explain why the time is '___ o'clock' or 'half past ___'
- ☐ (I can create times using clocks with moveable hands)

Starter: The children in Ava's class are telling the time.
Do you agree with Ava? Can you explain your thinking?



I think that the time is very nearly 9 o'clock.



Ava is not correct. She has mixed up the hour and the minute hand. For 9 o'clock, the hour hand points to the 9 and the minute hand points to the 12.

To tell the time to the hour and the half hour

Talking Time: Can you match the meals to the approximate times that they would probably be eaten on a school day?

breakfast

half past 5

lunch

half past 8

tea

12 o'clock

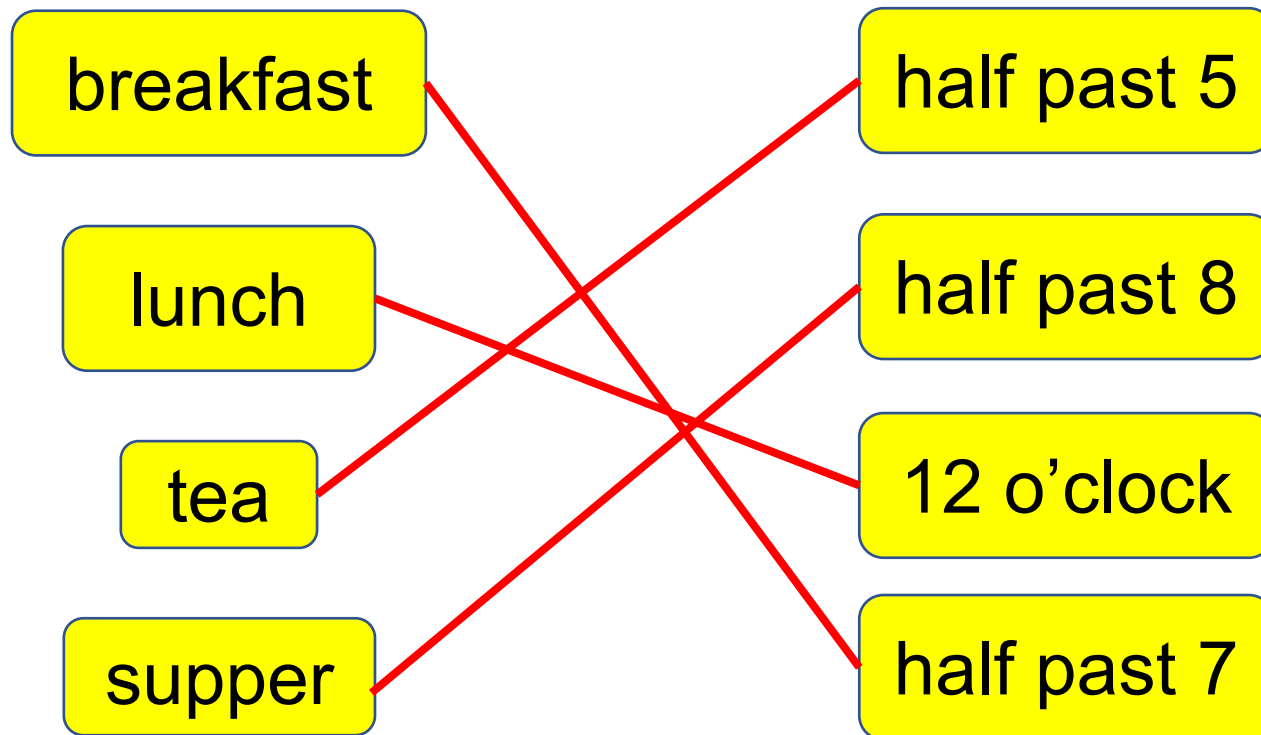
supper

half past 7

Can you use a clock to show the position of the hands for these times?

To tell the time to the hour and the half hour

Talking Time: Can you match the meals to the approximate times that they would probably be eaten on a school day?



Can you use a clock to show the position of the hands for these times?

To tell the time to the hour and the half hour

Talking Time: Here are the opening and closing times of a shop.
Can you match the labels below to their best fit times?

Opens in the
morning

Closes for lunch

Opens in the
afternoon

Closes in the
evening

half past 12

half past 5

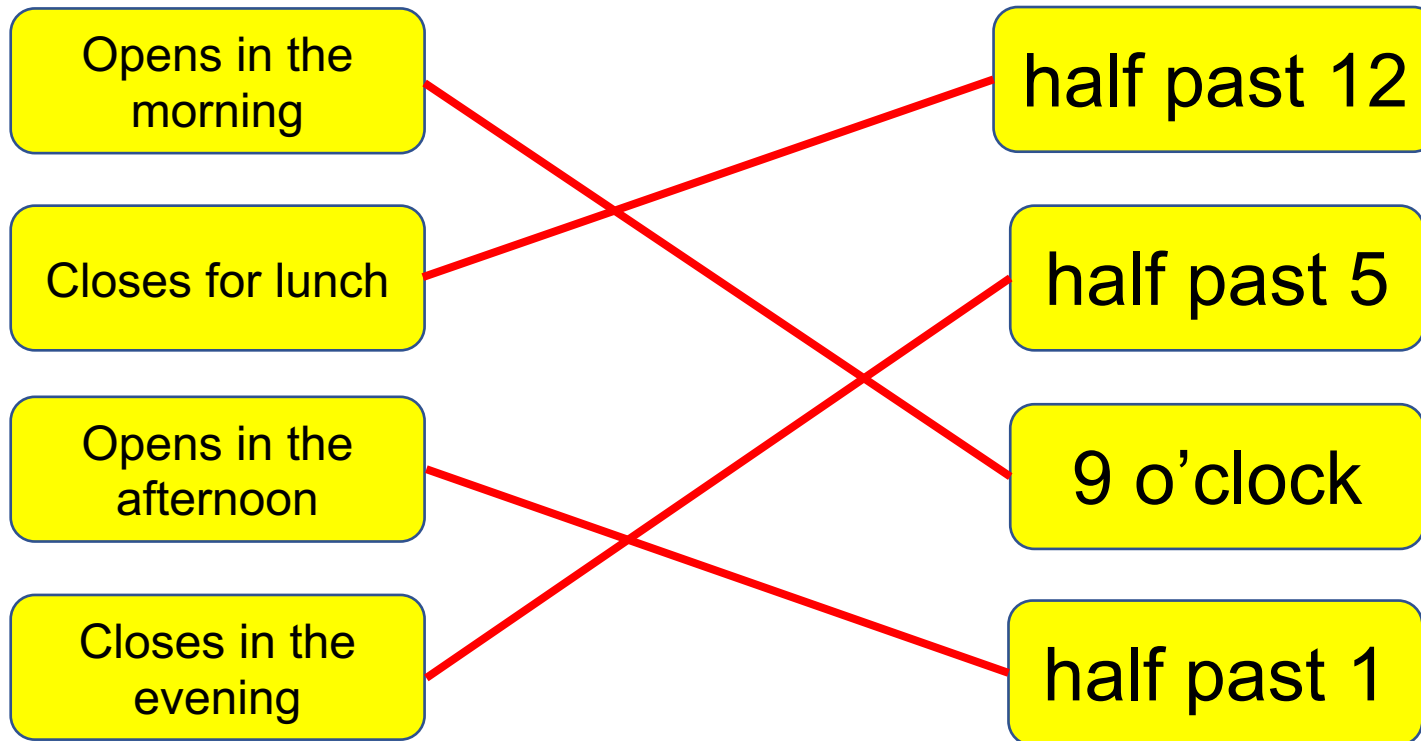
9 o'clock

half past 1

Can you use a clock to show the position of the hands for these times?

To tell the time to the hour and the half hour

Talking Time: Here are the opening and closing times of a shop.
Can you match the labels below to their best fit times?



Can you use a clock to show the position of the hands for these times?

To tell the time to the hour and the half hour

Activity 1: At Riley's school, Key Stage 1 children have a break at half past 10.
Do you agree with Riley?
Can you explain how you know?



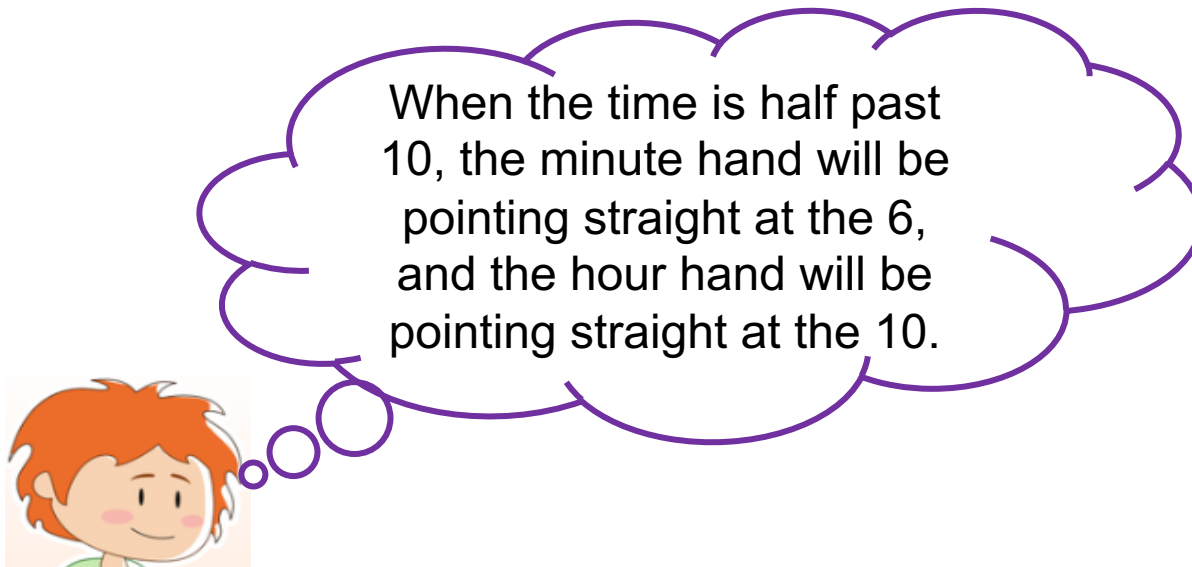
When the time is half past 10, the minute hand will be pointing straight at the 6, and the hour hand will be pointing straight at the 10.

Extension:

The classroom clock has stopped.
The battery is changed.
The teacher puts the hands to the right time of half past 2.
Where will the two hands be? Why?

To tell the time to the hour and the half hour

Activity 1: At Riley's school, Key Stage 1 children have a break at half past 10.
Do you agree with Riley?
Can you explain how you know?



Riley is not correct.

For half past 10, the hour hand should be halfway between the 10 and the 11.
However, the minute hand is in the correct place.

To tell the time to the hour and the half hour

Talking Time:

What time is it?

Can you complete the gaps in the stem sentence?



The time is _____ past _____.

To tell the time to the hour and the half hour

Talking Time:

What time is it?

Can you complete the gaps in the stem sentence?



The time is half past 7.

To tell the time to the hour and the half hour

Talking Time:

What time is it?

Can you complete the gaps in the stem sentence?

Why is this not half past 1?



The time is _____ past _____.

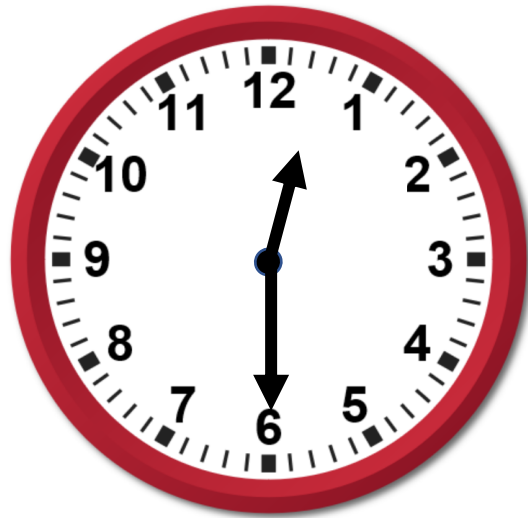
To tell the time to the hour and the half hour

Talking Time:

What time is it?

Can you complete the gaps in the stem sentence?

Why is this not half past 1?



The time is half past 12.

It is not half past 1 because the hour hand is halfway between the 12 and the 1.

The time is after 12 o'clock, but before 1 o'clock.

The next o'clock time is 1 o'clock, so it cannot be half past 1 here.

To tell the time to the hour and the half hour

Talking Time:

What time is it? How do you know?

Can you complete the gaps in the stem sentence?



The time is _____ past _____.

To tell the time to the hour and the half hour

Talking Time:

What time is it? How do you know?

Can you complete the gaps in the stem sentence?



The time is half past 6.

The minute hand is pointing directly at the 6 to show that it is half past.

The time is half past 6 because the hour hand is exactly halfway between the 6 and the 7.

To tell the time to the hour and the half hour

Activity 2: Oops!

The minute hand has fallen off the classroom clock.
However, the teacher knows that it is half past 10.
How does she know that? Can you explain?



To tell the time to the hour and the half hour

Activity 2: Oops!



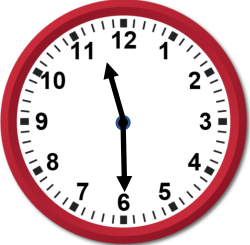
The minute hand has fallen off the classroom clock.
However, the teacher knows that it is half past 10.
How does she know that? Can you explain?



The teacher knows that the time is half past 10 because the hour hand is exactly halfway between the 10 and the 11.



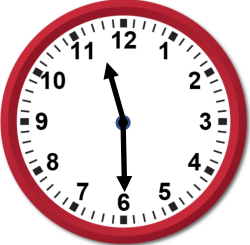
To tell the time to the hour and the half hour

Talking Time: Can you complete the table below by writing in the missing times?

Clock face time	Written time
	2 o'clock
	_____
	_____

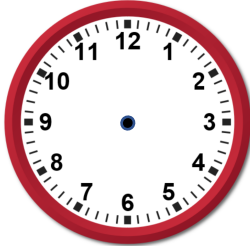
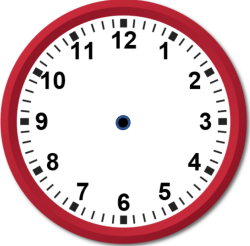
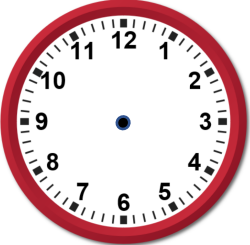
To tell the time to the hour and the half hour

Talking Time: Can you complete the table below by writing in the missing times?

Clock face time	Written time
	2 o'clock
	<u>half past 4</u>
	<u>half past 11</u>



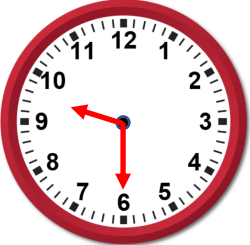
To tell the time to the hour and the half hour

Talking Time: Complete the table below by drawing the missing hands on the clocks.

Clock face time	Written time
	11 o'clock
	half past 10
	half past 9

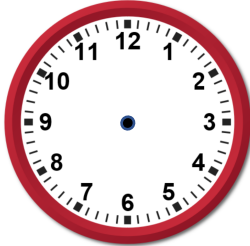

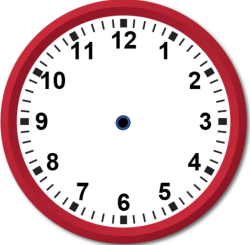
To tell the time to the hour and the half hour

Talking Time: Complete the table below by drawing the missing hands on the clocks.

Clock face time	Written time
	11 o'clock
	half past 10
	half past 9




To tell the time to the hour and the half hour

Talking Time: Complete the table below by drawing the hands or writing the times.

Clock face time	Written time
	12 o'clock
	_____
	half past 1

To tell the time to the hour and the half hour

Talking Time: Complete the table below by drawing the hands or writing the times.

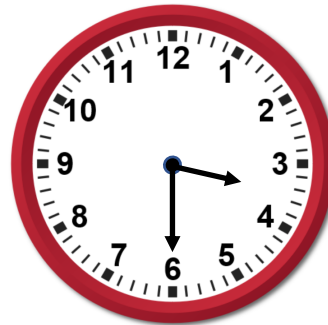
Clock face time	Written time
	12 o'clock
	<u>half past 5</u>
	half past 1

To tell the time to the hour and the half hour

Activity 3: Three children are telling the time from the clock.
Who do you agree with? Why? Can you explain the mistakes?



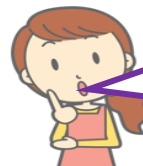
I think that
the time on
the clock is
half past 4.



I think that
the time on
the clock is
half past 6.



Jenson



Bella

I think that
the time on
the clock is
half past 3.

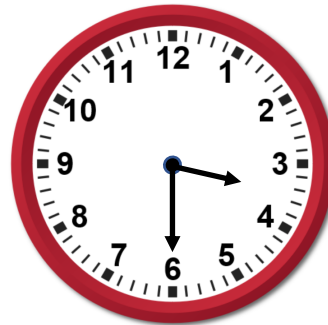
To tell the time to the hour and the half hour

Activity 3: Three children are telling the time from the clock.

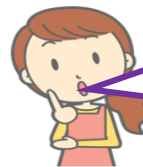
Who do you agree with? Why? Can you explain the mistakes?



I think that the time on the clock is half past 4.



I think that the time on the clock is half past 6.



Bella

I think that the time on the clock is half past 3.

Bella is correct.

Darcey is incorrect because the hour hand has not gone past the 4 yet, so it cannot be half past 4.

Jenson is incorrect because he has mixed up the hour hand with the minute hand.

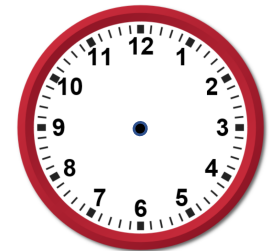
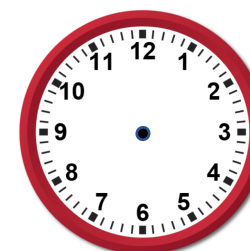
To tell the time to the hour and the half hour

- ☐ I can read clock faces to tell the time to the hour and half past the hour
- ☐ I can explain why the time is '___ o'clock' or 'half past ___'
- ☐ (I can create times using clocks with moveable hands)

Evaluation: Here is a pattern of clock faces.

Can you work out the pattern?

Can you draw in the missing hands on the final two clocks?



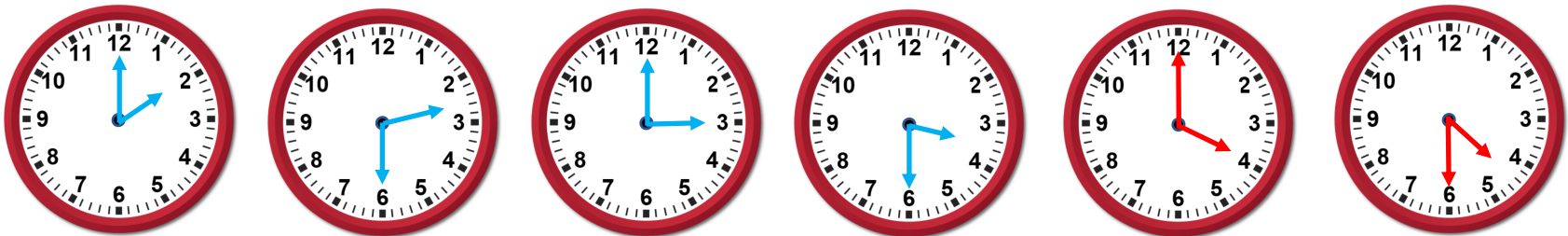
To tell the time to the hour and the half hour

- ☐ I can read clock faces to tell the time to the hour and half past the hour
- ☐ I can explain why the time is '___ o'clock' or 'half past ___'
- ☐ (I can create times using clocks with moveable hands)

Evaluation: Here is a pattern of clock faces.

Can you work out the pattern?

Can you draw in the missing hands on the final two clocks?



The pattern on the clocks shows the time every half an hour.

So, the pattern is o'clock, half past, o'clock, half past, o'clock, half past.




The last two clocks show 4 o'clock and half past 4.

Do you have a group of pupils who need a boost in maths this term?

Each pupil could receive a personalised lesson every week from our specialist 1-to-1 maths tutors.

- Raise attainment
- Plug any gaps or misconceptions
- Boost confidence

Speak to us:

-  thirdspacelearning.com
-  0203 771 0095
-  hello@thirdspacelearning.com