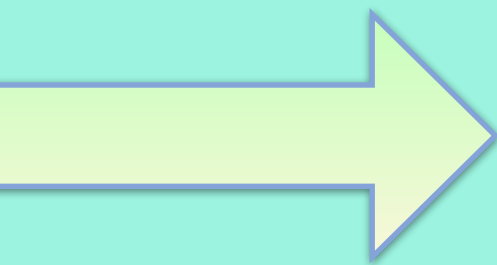


My World and Me

Today we will be...

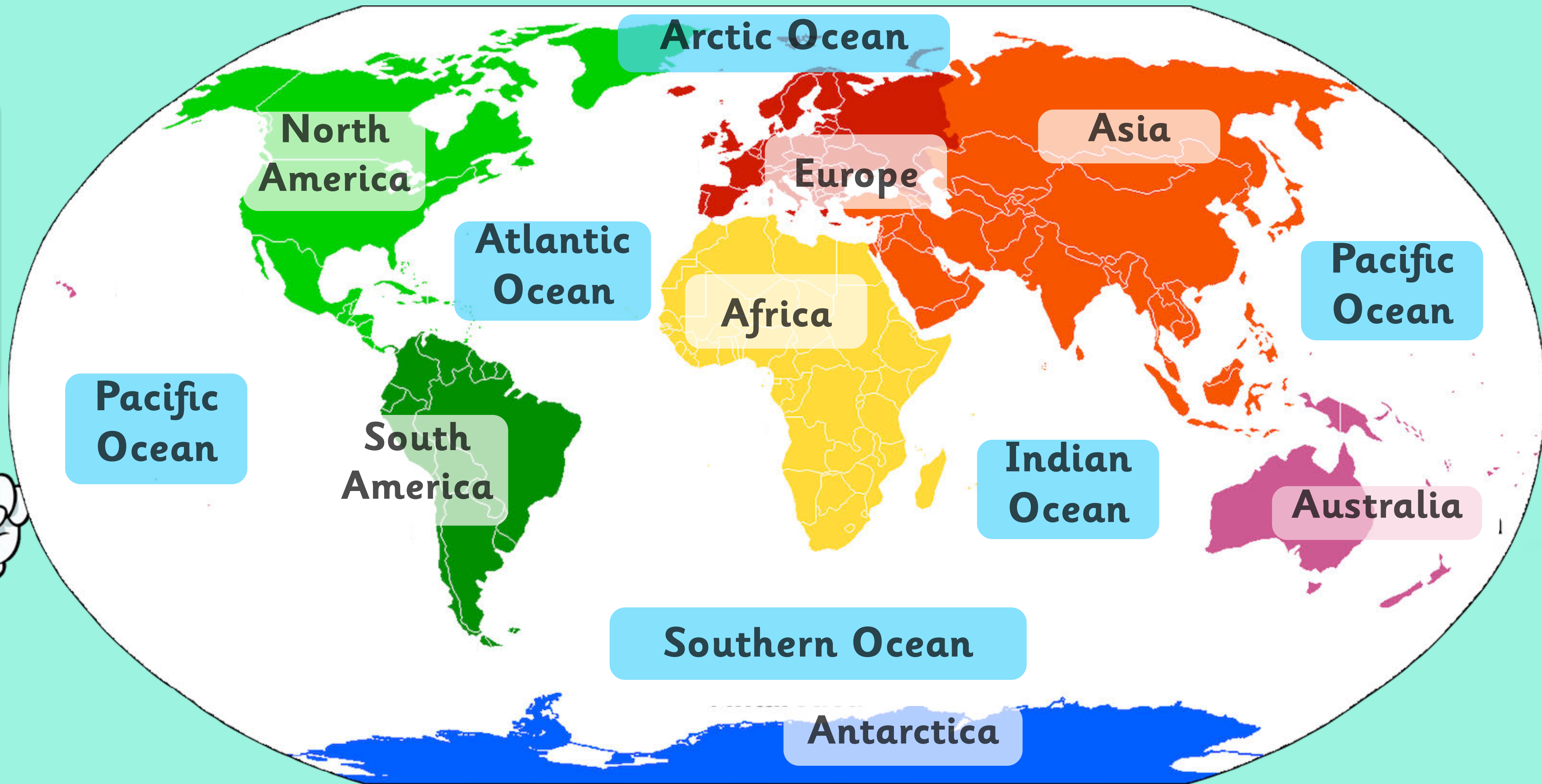
Finding out where different animals live in the world.



This is a world map.

Think, pair,
share.

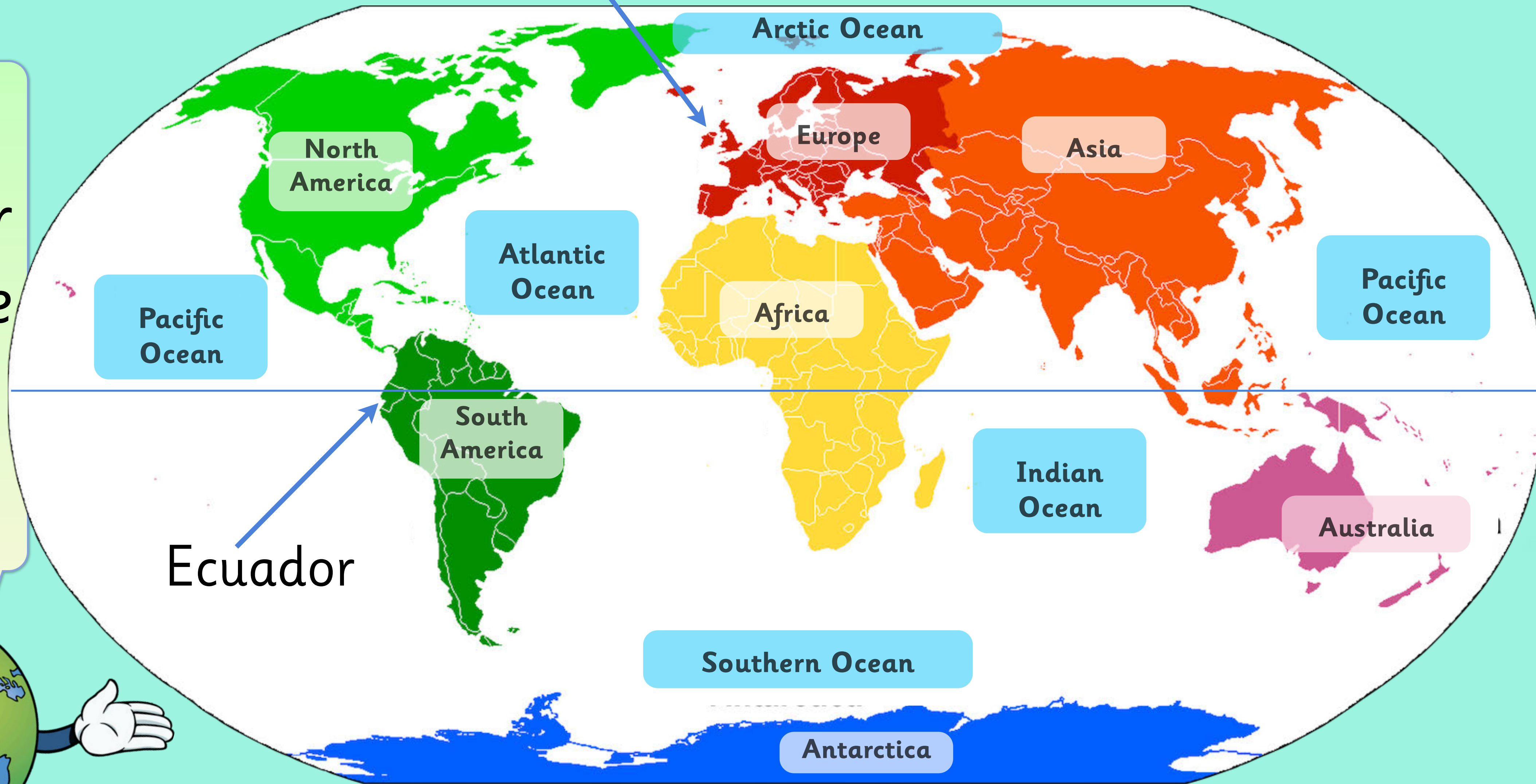
Where is the
UK on this
map?



Think, pair,
share.

Can you
remember
where the
equator
is?

The UK is in Europe.



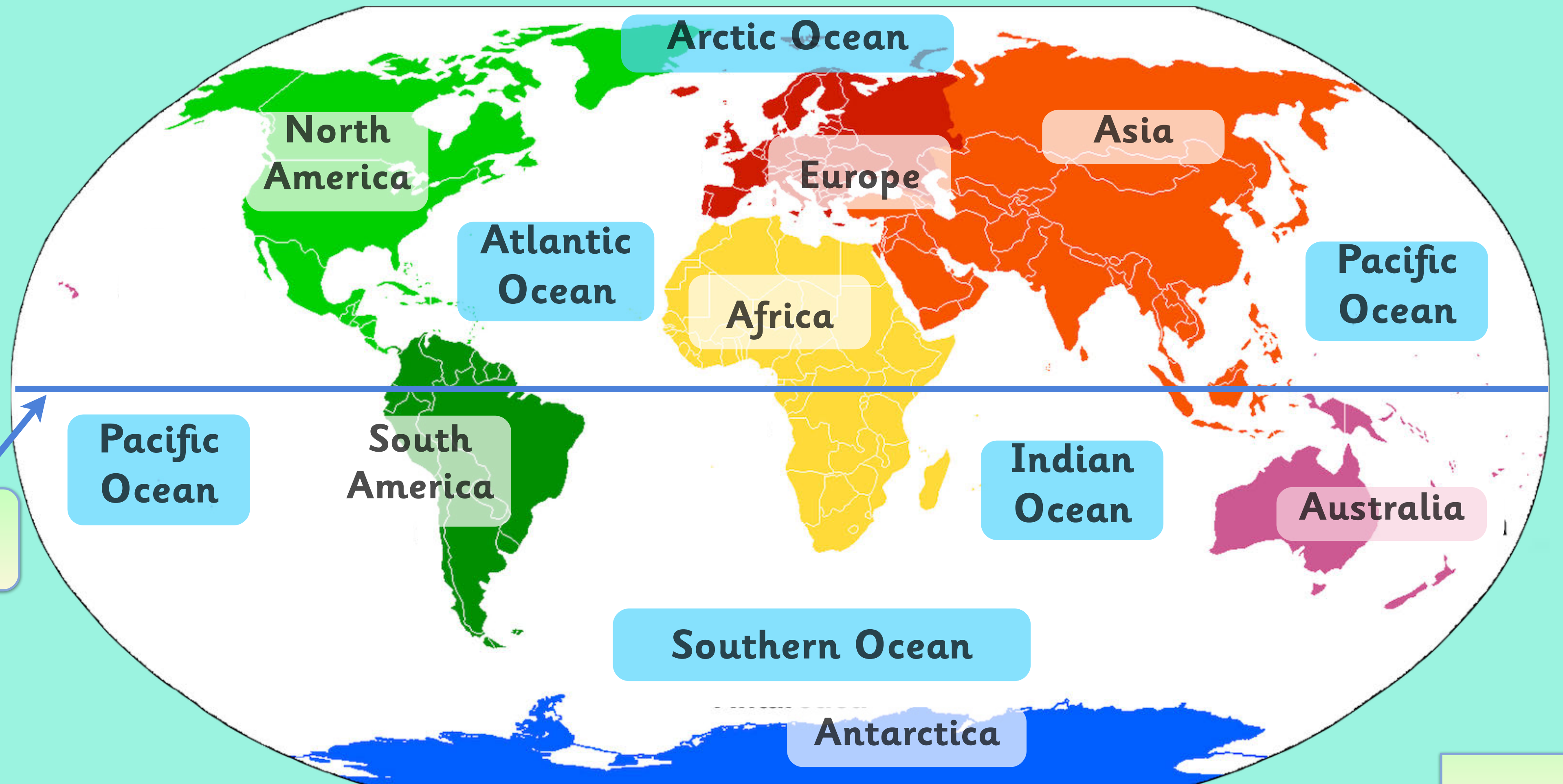
Equator



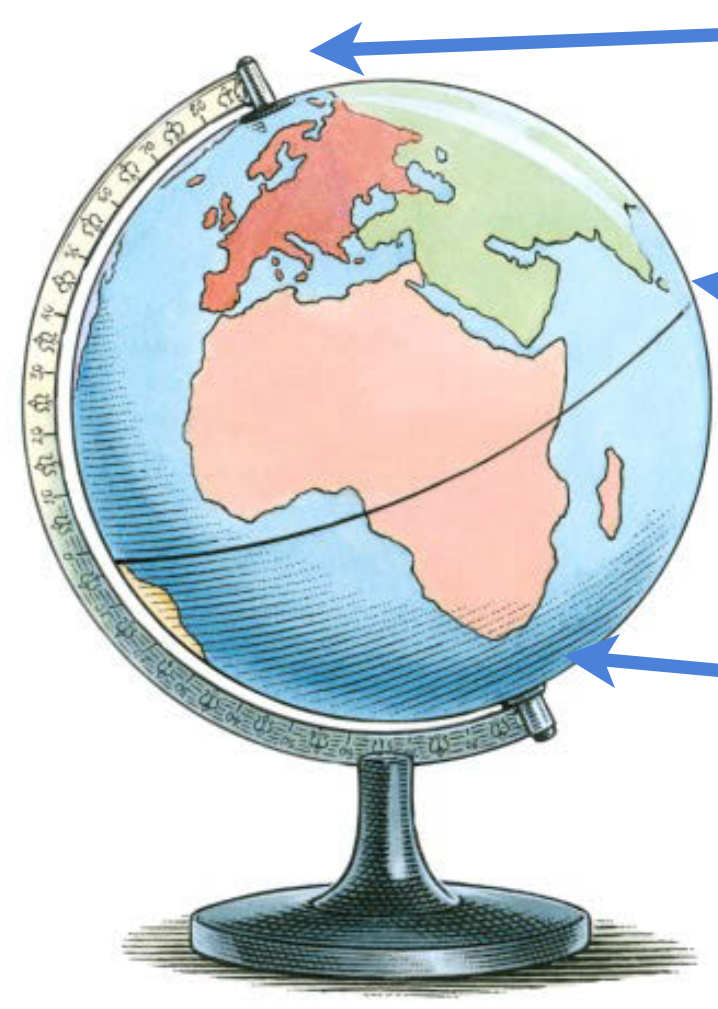
The equator goes around the centre of the earth. Can you remember where the North Pole and the South Pole are?



The equator



The equator



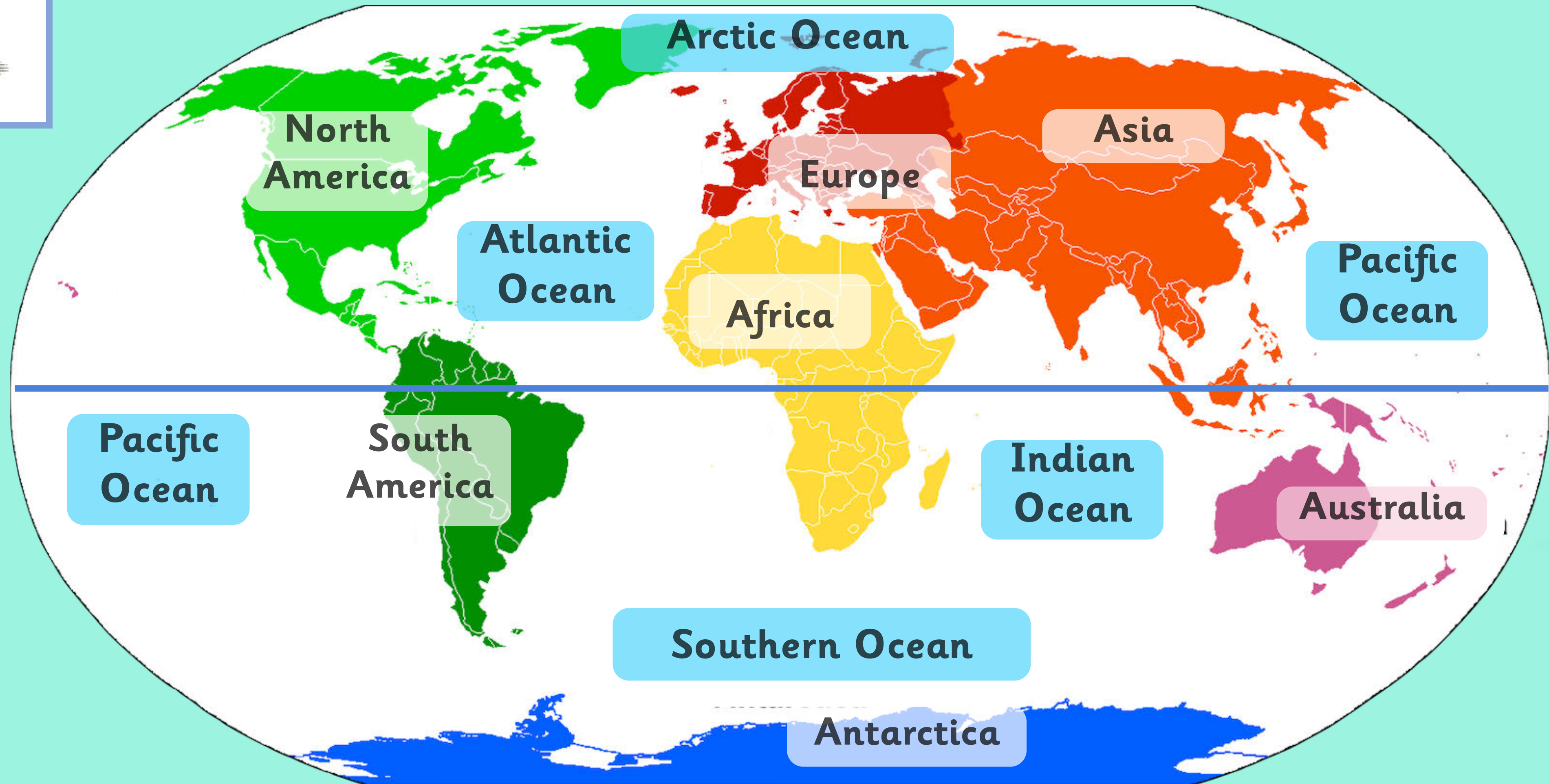
The North Pole

The equator

The South Pole

Is the climate the same everywhere in the world?

What is the weather like at the equator?
What is it like at the poles?



Arctic Ocean

North America

Atlantic Ocean

Africa

Europe

Asia

Pacific Ocean

Pacific Ocean

South America

Indian Ocean

Australia

Southern Ocean

Antarctica

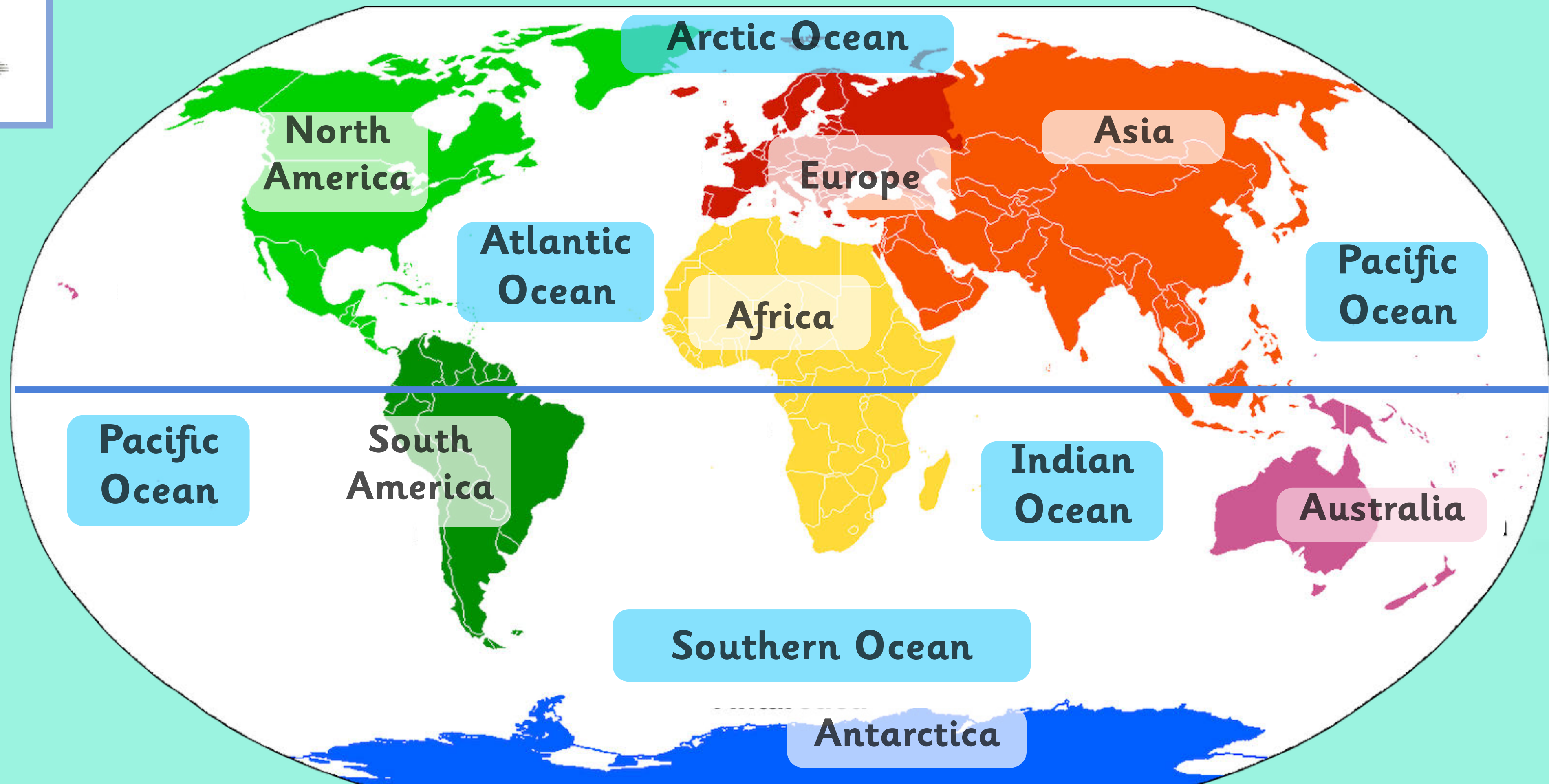


The North Pole

The equator

The South Pole

The countries that are near the equator are hotter than the countries that are near the poles. The North and South Poles are covered in snow all year round.



Arctic Ocean

North
America

Atlantic
Ocean

Africa

Europe

Asia

Pacific
Ocean

Pacific
Ocean

South
America

Indian
Ocean

Australia

Southern Ocean

Antarctica



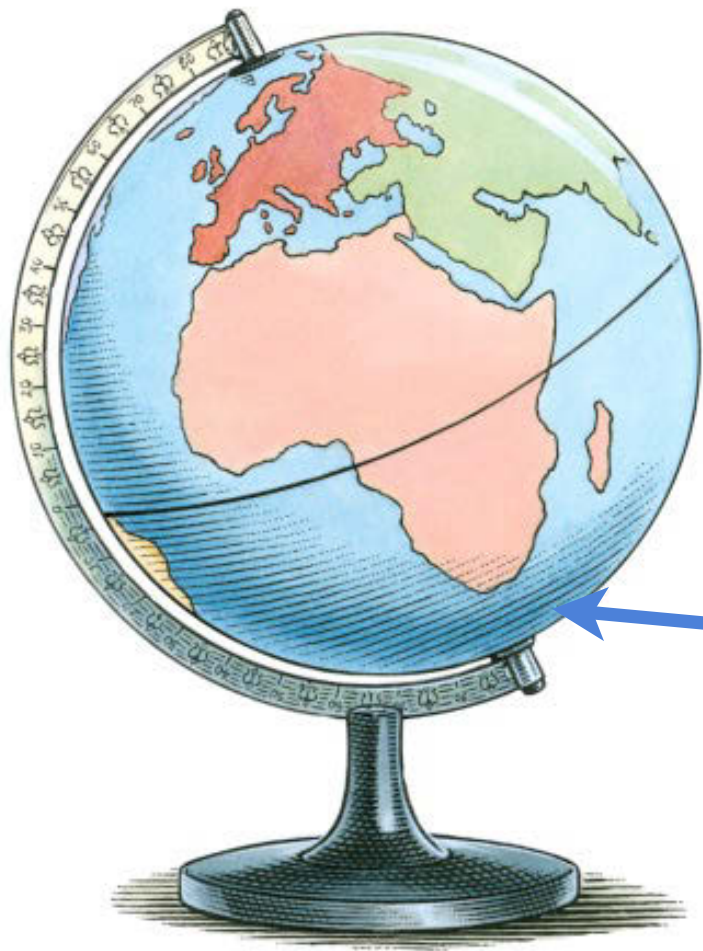
The North Pole

The equator

The South Pole

What animal is this? Do you think it lives in a hot or a cold climate?





The South Pole

These are gentoo penguins. They live in Antarctica. The Antarctic is the area around the South Pole. It is very cold there so the penguins have a thick layer of blubber to keep themselves warm.





The North Pole

The equator

The South Pole

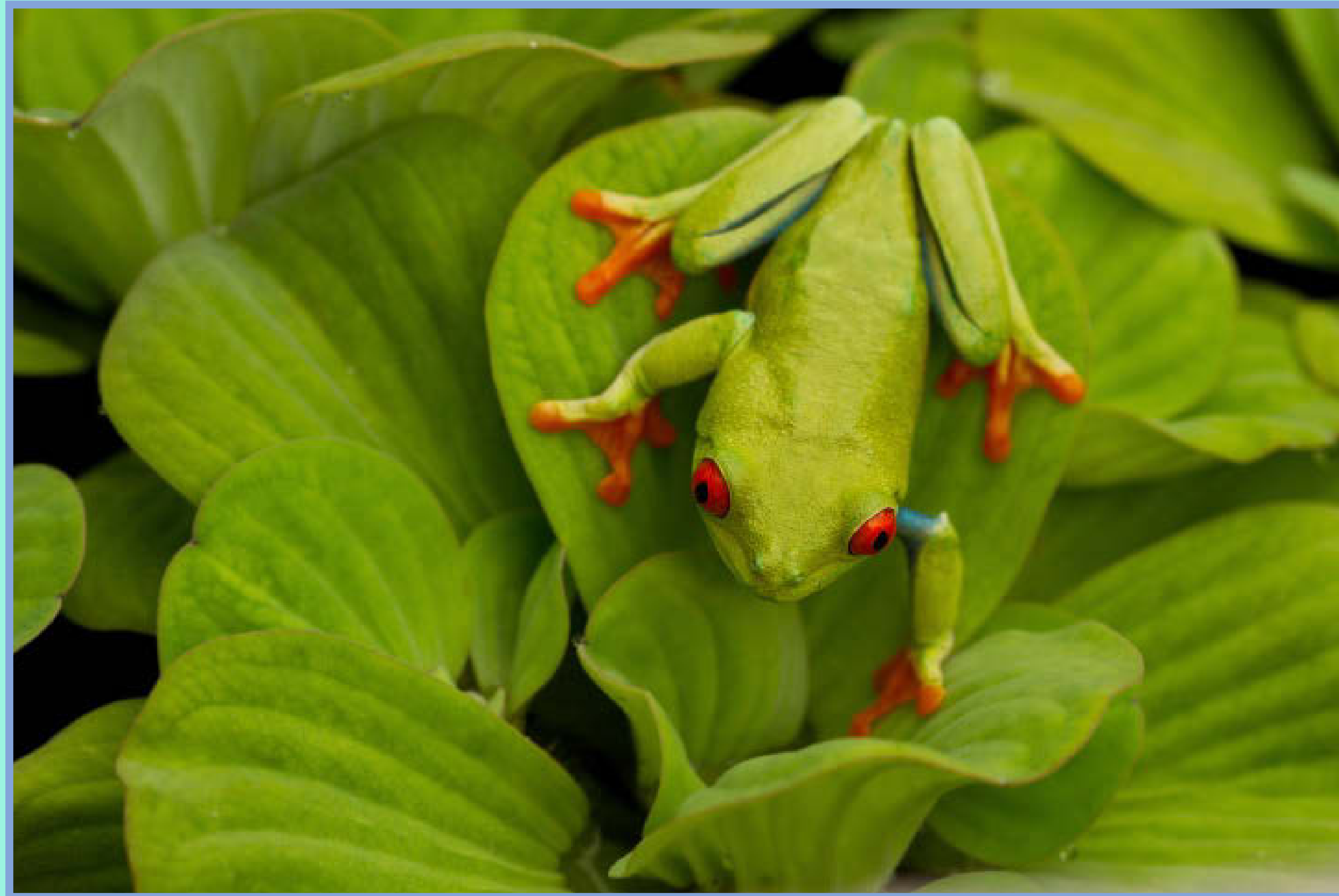
What animal is this? Do you think it lives in a hot or a cold climate?





The equator

This is a red-eyed tree frog. They live in the rainforest in Mexico and Central America. The rainforests are near the equator where it is hot. The red-eyed tree frog stays near water to keep cool.





The North Pole

The equator

The South Pole

What animal is this?
Do you think it lives in
a hot or a cold climate?



The North Pole



This is a polar bear. They live in the Arctic, which is the area around the North Pole. The climate in the Arctic is cold. Polar bears have thick fur and a layer of blubber to keep them warm.



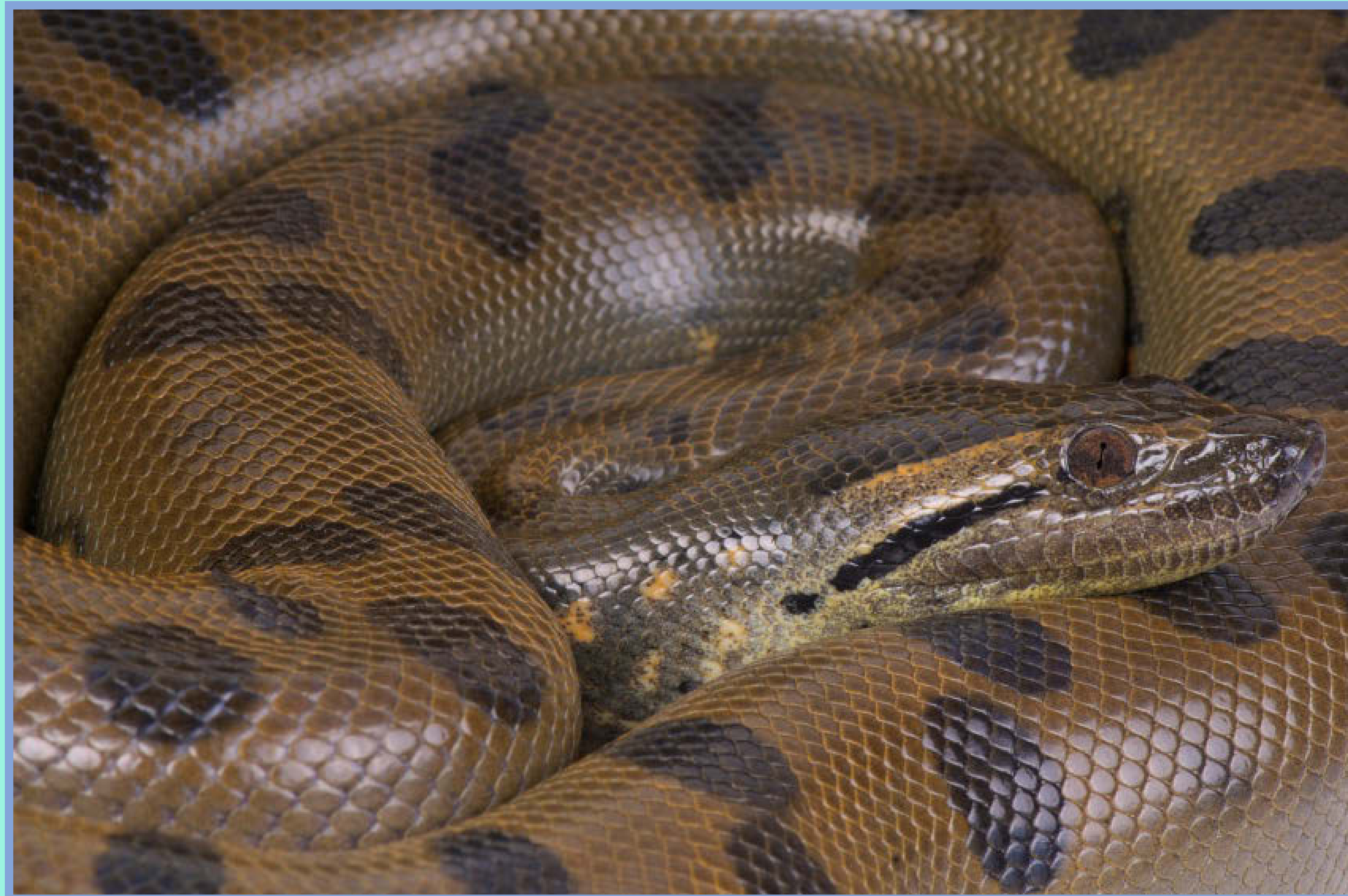


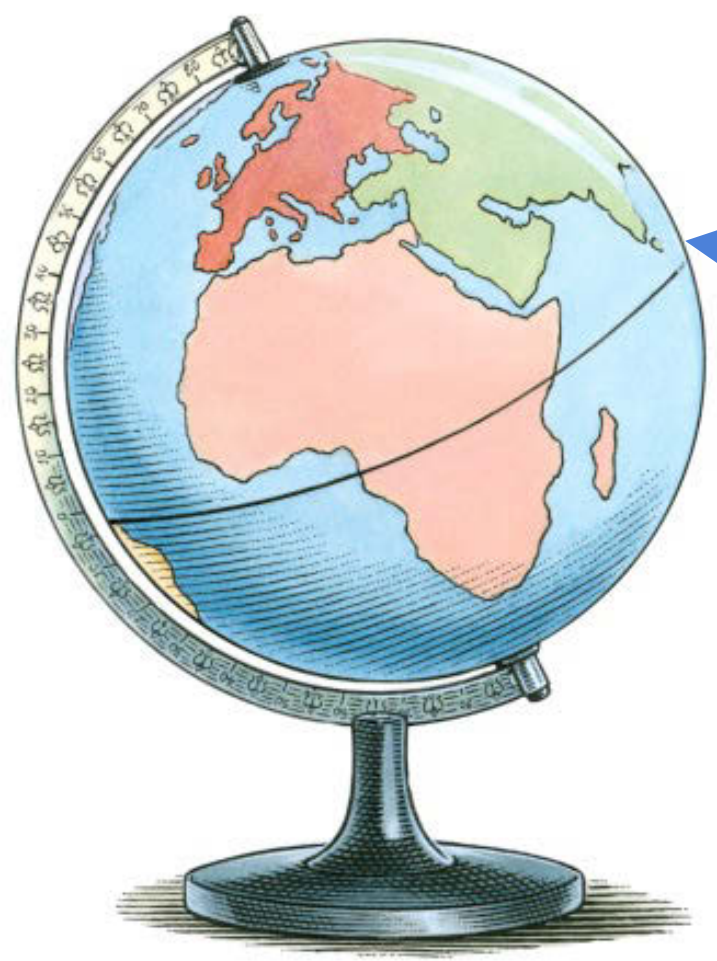
The North Pole

The equator

The South Pole

What animal is this? Do you think it lives in a hot or a cold climate?





The equator

This is an anaconda. This snake lives in the rainforest. The rainforest is near the equator where it is hot. Snakes are cold-blooded. This means they cannot keep themselves warm so they need to rely on the sun to warm them up.





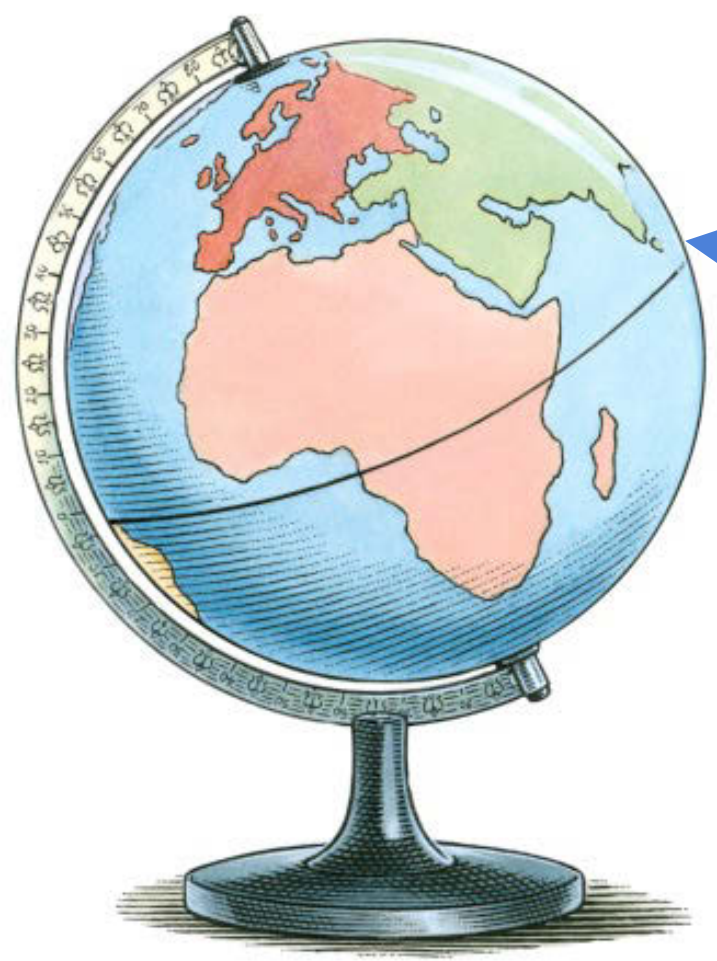
The North Pole

The equator

The South Pole

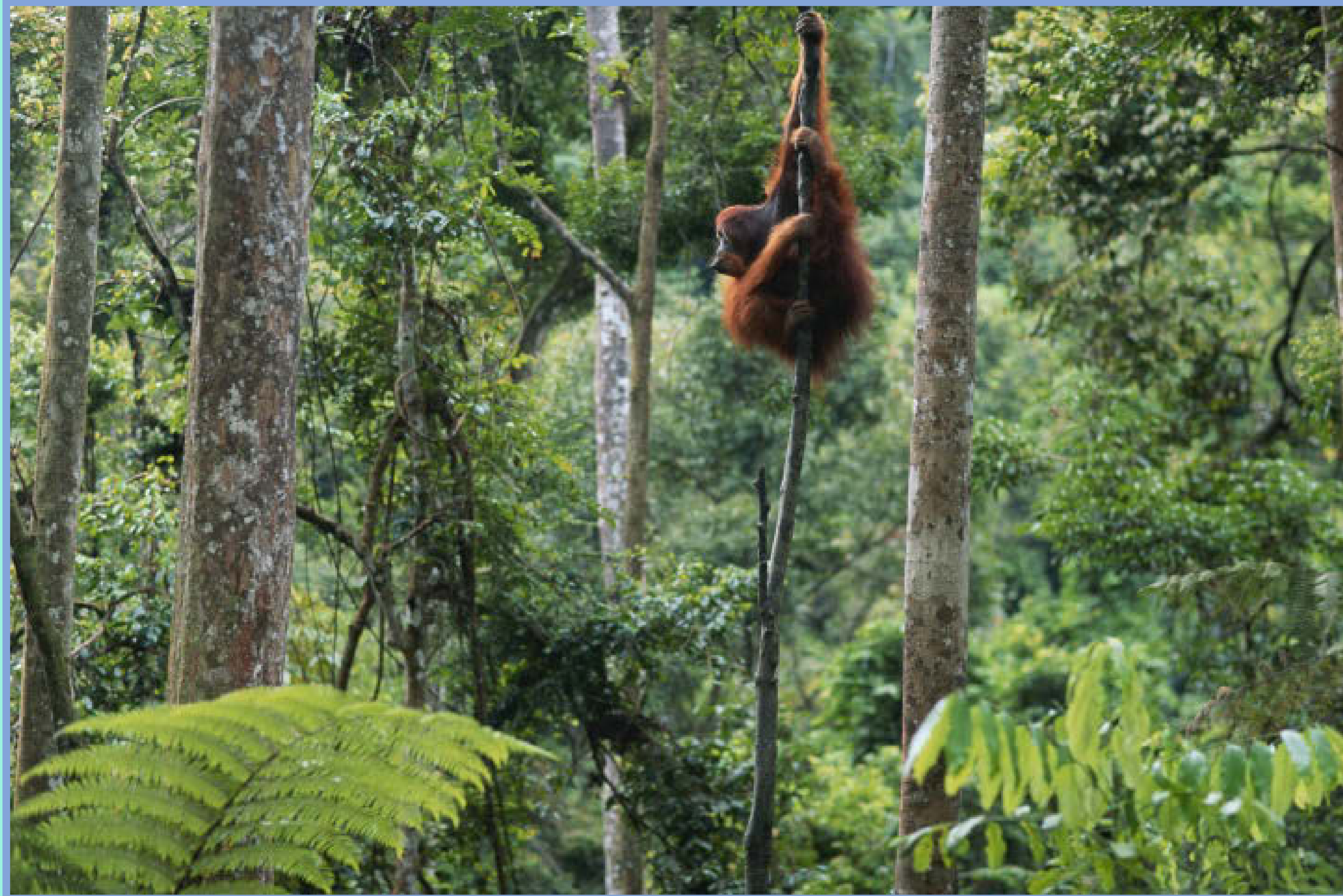
What animal is this?
Do you think it lives in
a hot or a cold climate?





The equator

These are orangutans. They live in the rainforest in Indonesia and Malaysia. The rainforest is near the equator where it is hot. Orangutans have strong arms so they can climb trees and find food.



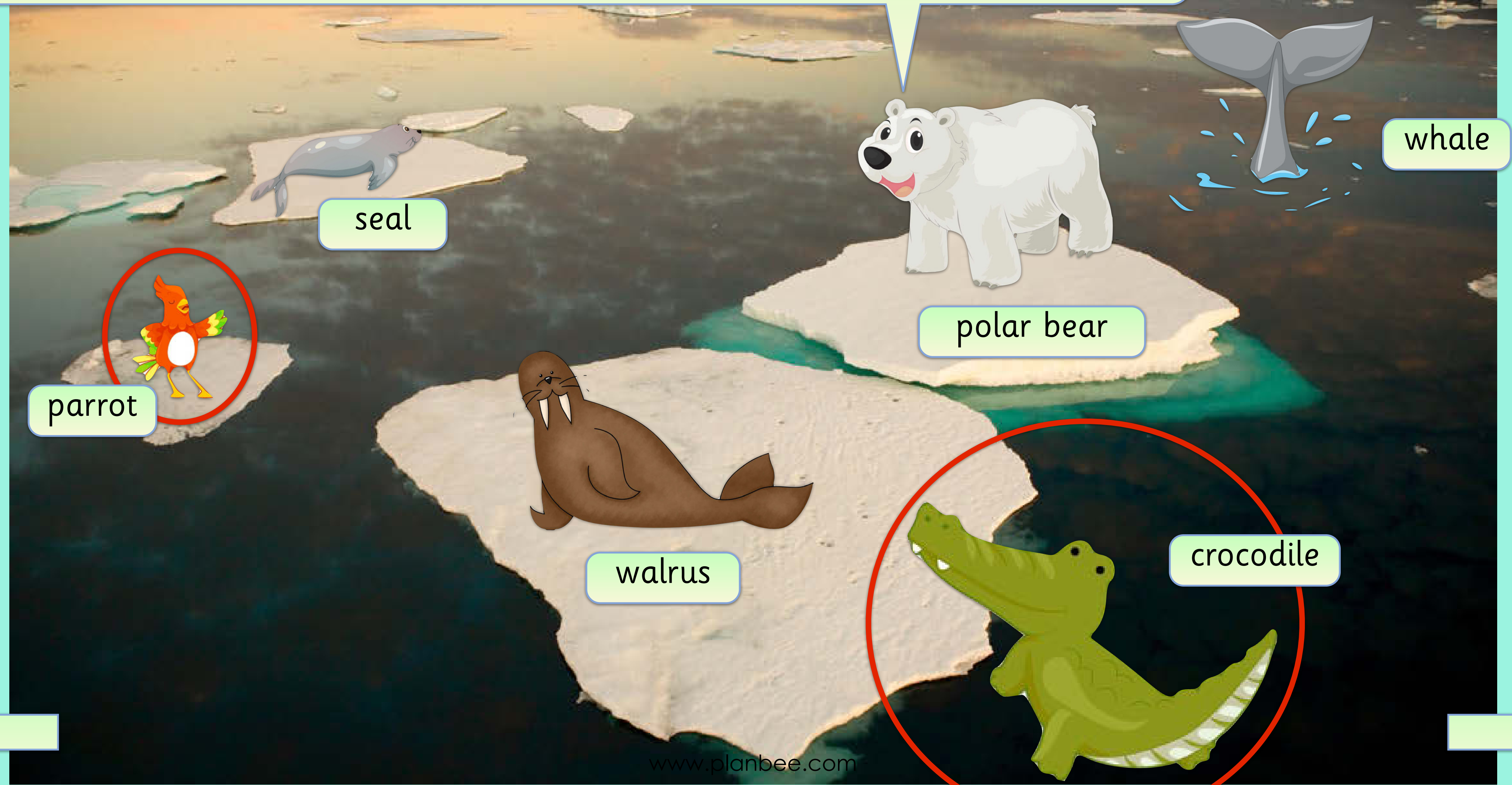
Have a look at the Arctic scene on the next slide.
Which animals should be in the Arctic?
Can you spot the two animals that shouldn't be there?



Remember the Arctic is
near the North Pole so it
is cold.



Did you get it right? The crocodile and parrot should not be in the Arctic. It would be far too cold for them!



Have a look at the rainforest scene on the next slide. Which animals should be in the rainforest? Can you spot the two animals that shouldn't be there?



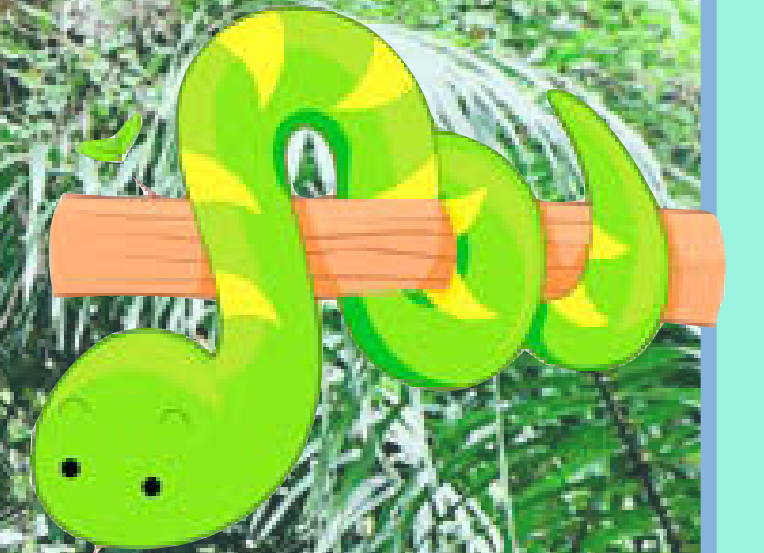
Remember the rainforest is near the equator so it is hot.



Did you get it right? The polar bear and the seal should not be in the rainforest. It would be far too hot for them here!



toucan



snake



parrot



gorilla



polar bear



crocodile



frog

seal



Have a look at the Russian tundra scene on the next slide. Which animals should be in the Arctic Tundra? Can you spot the two animals that shouldn't be there?



Remember the Arctic Tundra is near the North Pole so it is cold.



Did you get it right? The toucan and the monkey should not be in the arctic tundra. It would be far too cold for them here and there are no trees for them to live in!



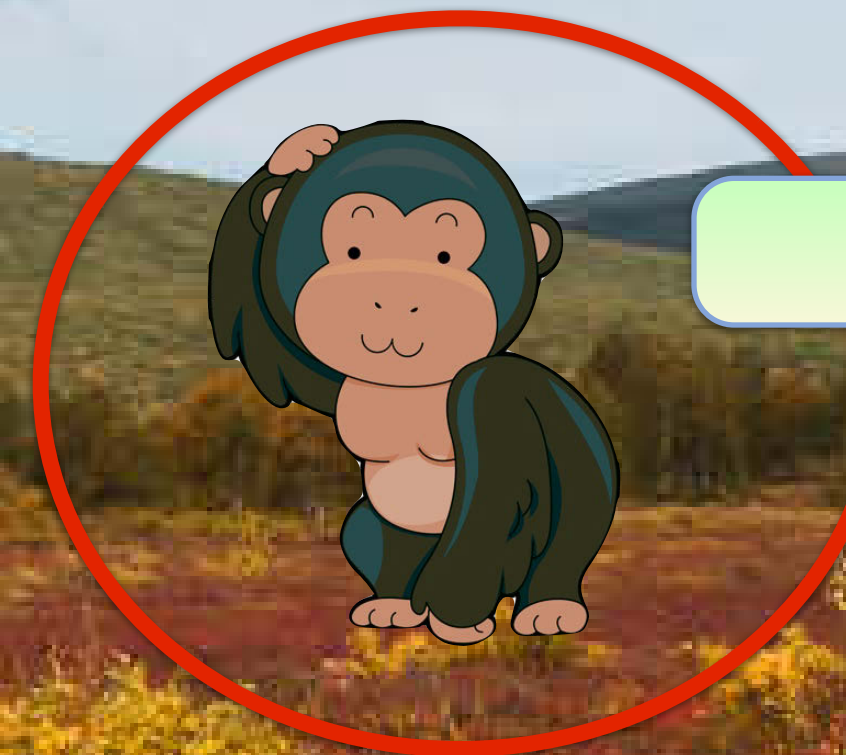
toucan



reindeer



arctic hare



monkey



polar bear



arctic fox