

Monet and the Impressionists

Learning Objective:

To review the life and work of Claude Monet.

What have we learnt about Claude Monet and Impressionism?



Turn to a partner and see if you can think of three facts each, then share your facts with the rest of the class.

We have explored lots of Monet's paintings over the last few lessons but there are still many more that we haven't looked at.

Let's have a quick look at some of Monet's other famous paintings. For each one, discuss what you think of it and what you can see.



'Jean Monet on his Hobbyhorse' 1872

This is a
painting of
Monet's son,
Jean.



'A Woman in the Garden' 1867

How can you tell
that this is one of
Monet's earlier
works?





‘Weeping Willow’ 1919

Monet created a series of paintings of weeping willows between 1918 and 1919 to commemorate the French soldiers who had died during World War I.



‘The Magpie’ 1869

What
colours
can you
see in this
painting?



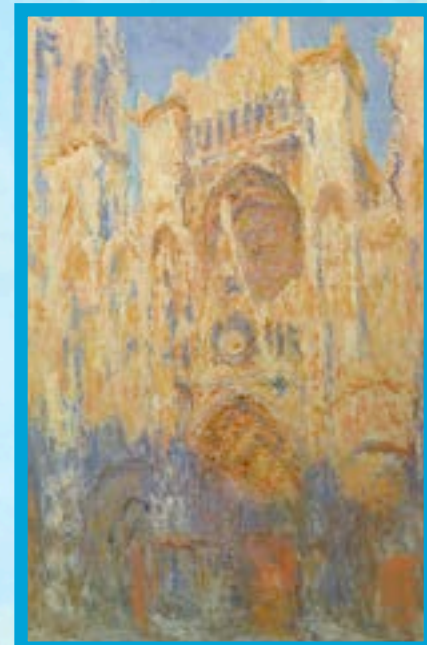
'Springtime' 1872

This painting shows Monet's first wife, Camille. She was the subject of many of his paintings.





Which Monet painting do you think is your favourite?



◀ BACK

NEXT ▶

Today we are going to be summarising the life and work of Claude Monet by writing a short biography.

What information could you include in a biography on Claude Monet?



What questions could you answer about his life?



Did you think of these questions?

When and where
was he born?

What was his early
life like?

Where did he live?

When did he first
start producing
art?

What are his most
famous works?

Was he married?

Did he have
children?

What kind of art is
he famous for?

What were his
biggest
achievements?

Who were his
contemporaries?

When did he die?

What is he most
remembered for?

Do you know the answers to any of these questions already?



◀ BACK

NEXT ▶